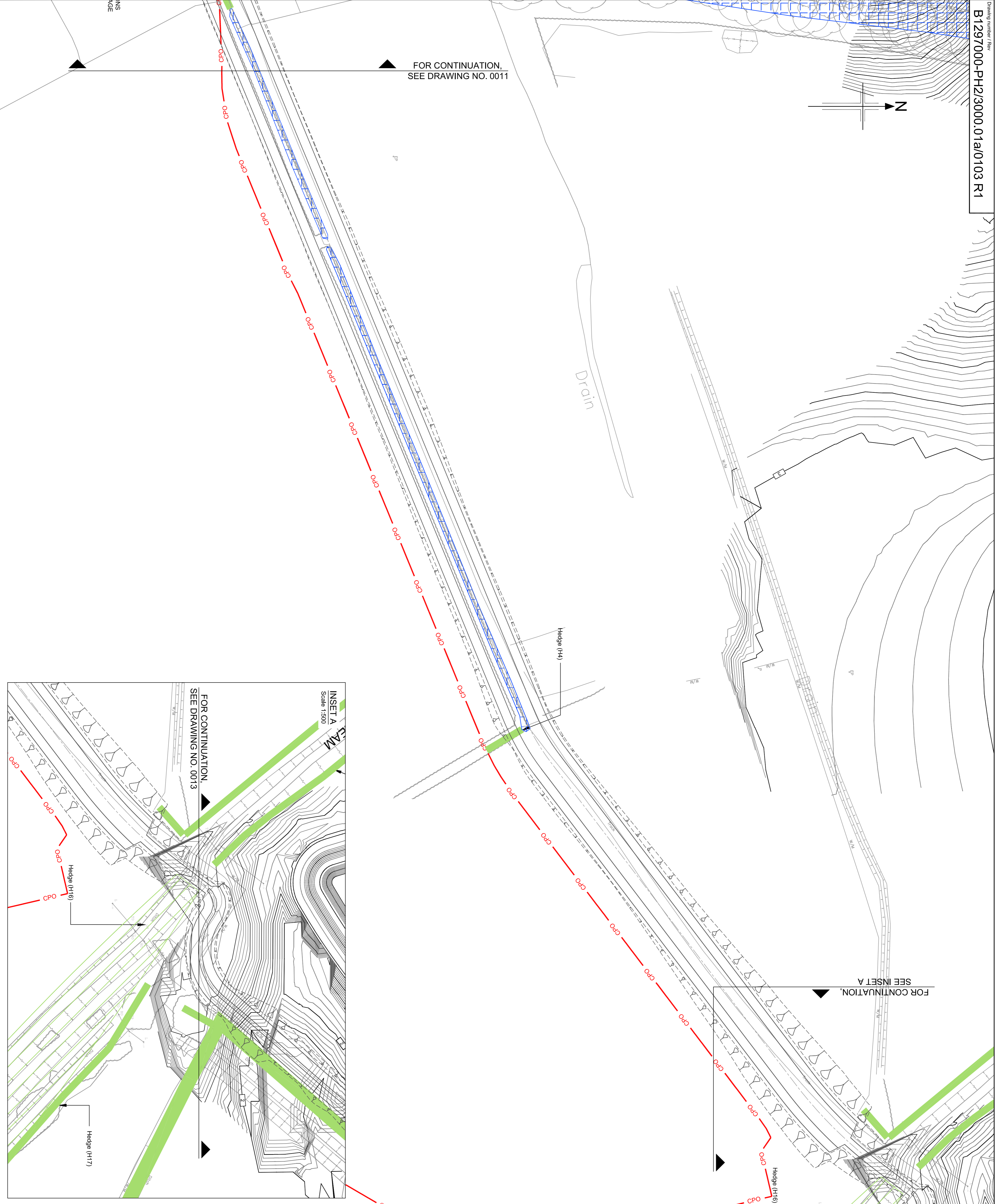
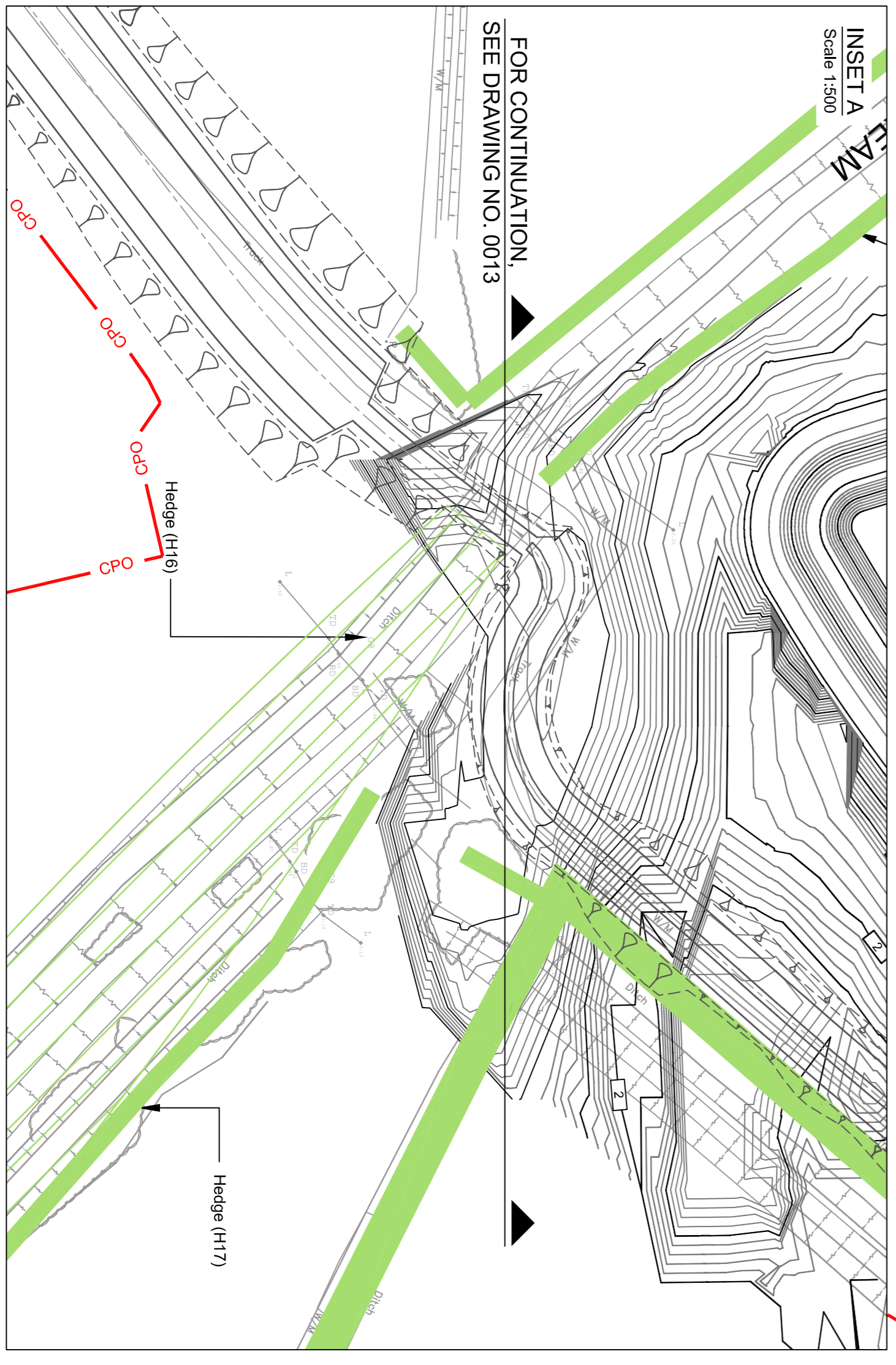


FOR CONTINUATION,  
 SEE DRAWING NO. 0011



FOR CONTINUATION,  
 SEE INSET A

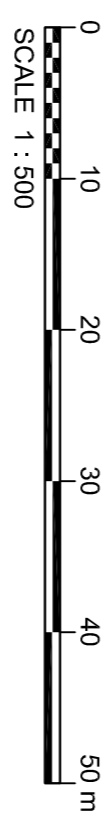


- NOTES**
1. Refer to drawing number B1297000/0200.01b/0001 to 0015 for Tree Survey - December 2012 Root Protection Zones.

- KEY**
- Area of managed vegetation to be retained shall be protected by temporary 2m high steel tube and wire mesh fence in accordance with BS 5837. Areas of management vegetation to be retained that are remote from the construction works may be protected by timber post and three wire fence.
  - Hedge rows and fence lines
  - Area of Hedges, trees, fence/lines and scrub
  - All items to be removed and taken to contractors storage tip off site unless otherwise stated.

SAFETY, HEALTH AND ENVIRONMENTAL INFORMATION	
In addition to the hazardous materials associated with the types of work defined on this drawing, note the following:	
CONSTRUCTION	
MAINTENANCE / CLEANING	
DECOMMISSIONING / DEMOLITION	

Reproduction from the Ordnance Survey Map with the permission of the controller of Her Majesty's stationery office Crown copyright reserved Licence No. AL 100017326



Rev	Rev. Date	Rev. Description	Drawn	Checked	Rev'd	App'd
R1	07/02/2013	INITIAL ISSUE	ILC	DM	SSG	RBD
R0	20/01/2013	INITIAL ISSUE	ASC	RHS	SSG	RBD

Employer: **JACOBS**  
 Simpson House, 6 Cherry Orchard Road, Gosport, Surrey, GU8 6BE  
 Tel: +44(0)208 666 8212 Fax: +44(0)208 661 2499  
 www.jacobs.com

Client: **HOCHTIEF TRUBBER**  
 Project: **BEXHILL TO HASTINGS LINK ROAD**

Drawing title: **PLANNING CONDITION 14 VEGETATION CLEARANCE SHEET 23 OF 35**

Drawing status	
Scale	1:500 @ A1
Issue	DO NOT SCALE
Client no.	B1297000-PH2
Drawing number	B1297000-PH2/3000.01a/0103
Rev	R1

This drawing is not to be used in whole or part other than for the intended purpose and project as defined on this drawing. Refer to the contract for full terms and conditions.